

# QUICKSTART

## BR 35/12 C BP Pack



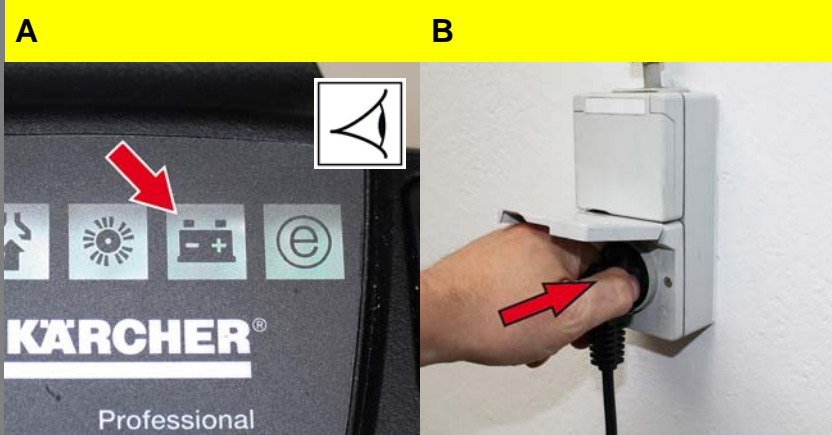
### Warning

These are only brief instructions! Please read and comply with these instructions prior to using or servicing your appliance.

The non-compliance of the operating and safety instructions may lead to damage of the appliance and to risks for the operator and other persons.

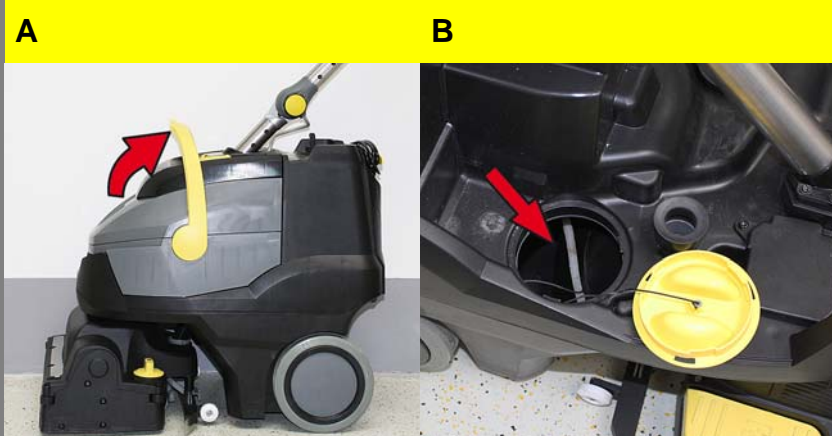
## Start up

1



- A Check battery charge indicator.  
Green Battery charged  
Orange: Battery almost empty  
Red Appliance switches off: Load battery  
Charge the battery if required.
- B Insert the mains plug into the socket.

2



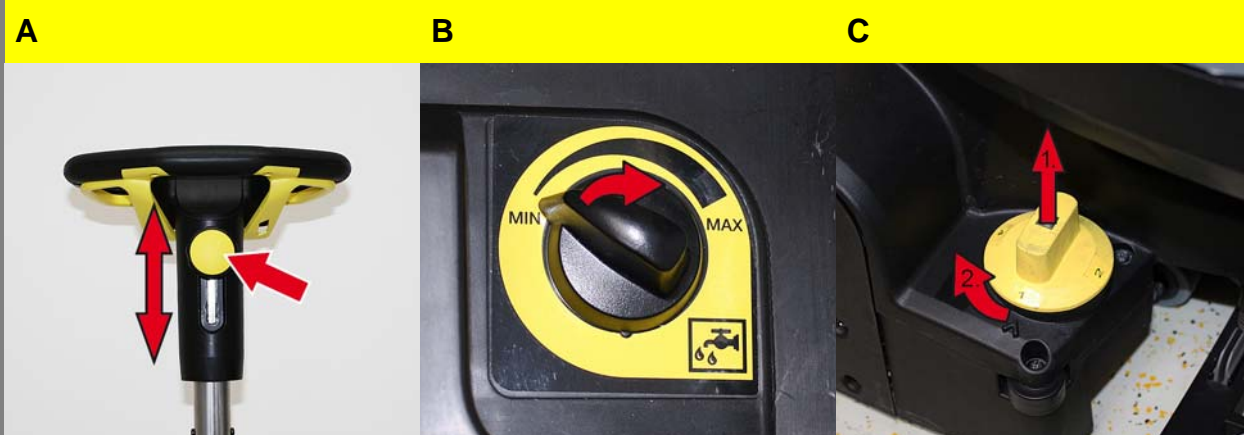
- Warning**  
Risk of damage. Only use the recommended detergents. With respect to different detergents the operator bears the increased risk regarding the operational safety and danger of accident. Only use detergents that are free from solvents, hydrochloric acid and hydrofluoric acid. Follow the safety instructions for using detergents.

### Note

Do not use highly foaming detergents. Observe the dosing notes.

- A Swivel up the carrying handle of the wastewater tank.  
Lift out the waste water reservoir and put it aside.
- B Open the cover of the fresh water reservoir. Pour in water/detergent mixture. Maximum temperature of the liquid 50 °C. Close the cover of the fresh water reservoir. Place the wastewater tank on the appliance.

3



- A Release the star knob for the height adjustment of the steering wheel. Adjust the steering wheel to the desired height. Tighten the star handle.
- B Adjust the dosing of the cleaning solution in accordance with the soiling and the type of the flooring material.
- C Adjust the rotary handle of the brush contact pressure to the desired value. Only adjust the brush contact pressure when the cleaning head is raised.

### Note

If the appliance pulls forwards too strongly during operation, reduce the contact pressure.

- D Bring the Eco mode switch into the desired position.  
Normal operation: The appliance works at the maximum brush speed and the highest suction performance.  
Eco: The appliance works at reduced brush speed and suction performance. This also reduces the energy consumption. The possible action time with one charging cycle increases.



## Operation

1



### Cleaning Caution

*Risk of damage to the floor covering.  
Do not operate the appliance on the spot.  
Risk of damage. Lift the vacuum bar before pulling the appliance backwards over a longer distance.*

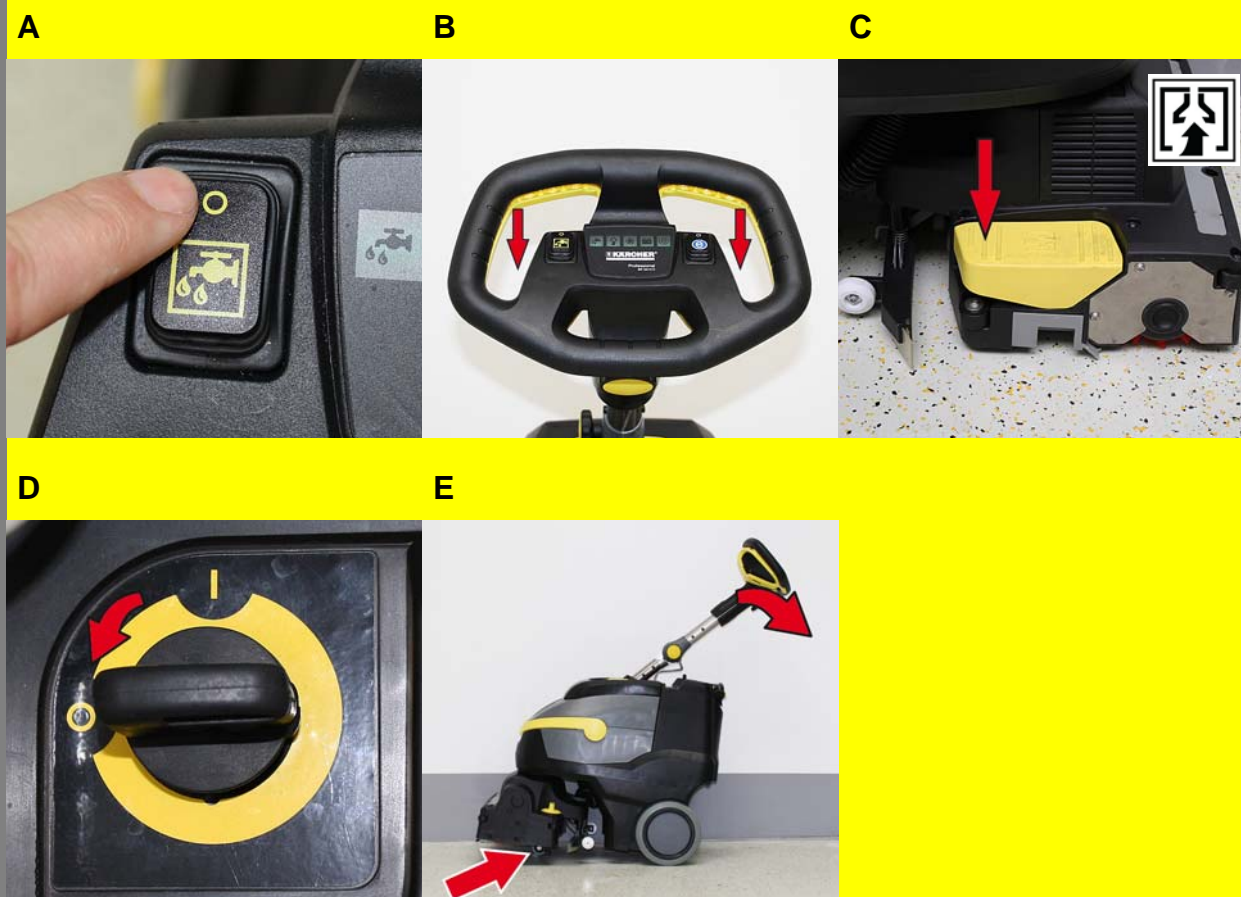
- A Set the appliance switch to "I".
- B Push the appliance forward until the parking stand folds up and the cleaning head touches the ground.
- C Switch on "Detergent" button.
- D Push down the pedal of the vacuum bar lifting device at the back to lower the vacuum bar.
- E Pull the safety switch towards the steering wheel, the brush drive and the application of the cleaning solution are switched on (if preset).  
Move the appliance over the surface to be cleaned.

### Note

*If the steering wheel is turned by 180°, the appliance also reverses.*

## Finish operation

1



### Shutting Down the Appliance

- A Switch off the cleaning solution switch. Drive the appliance forward for another 1-2 m to draw off residual water.
- B Release the safety switch.
- C Push down the pedal of the vacuum bar lifting device at the front to raise the vacuum bar.
- D Set the appliance switch to "0".

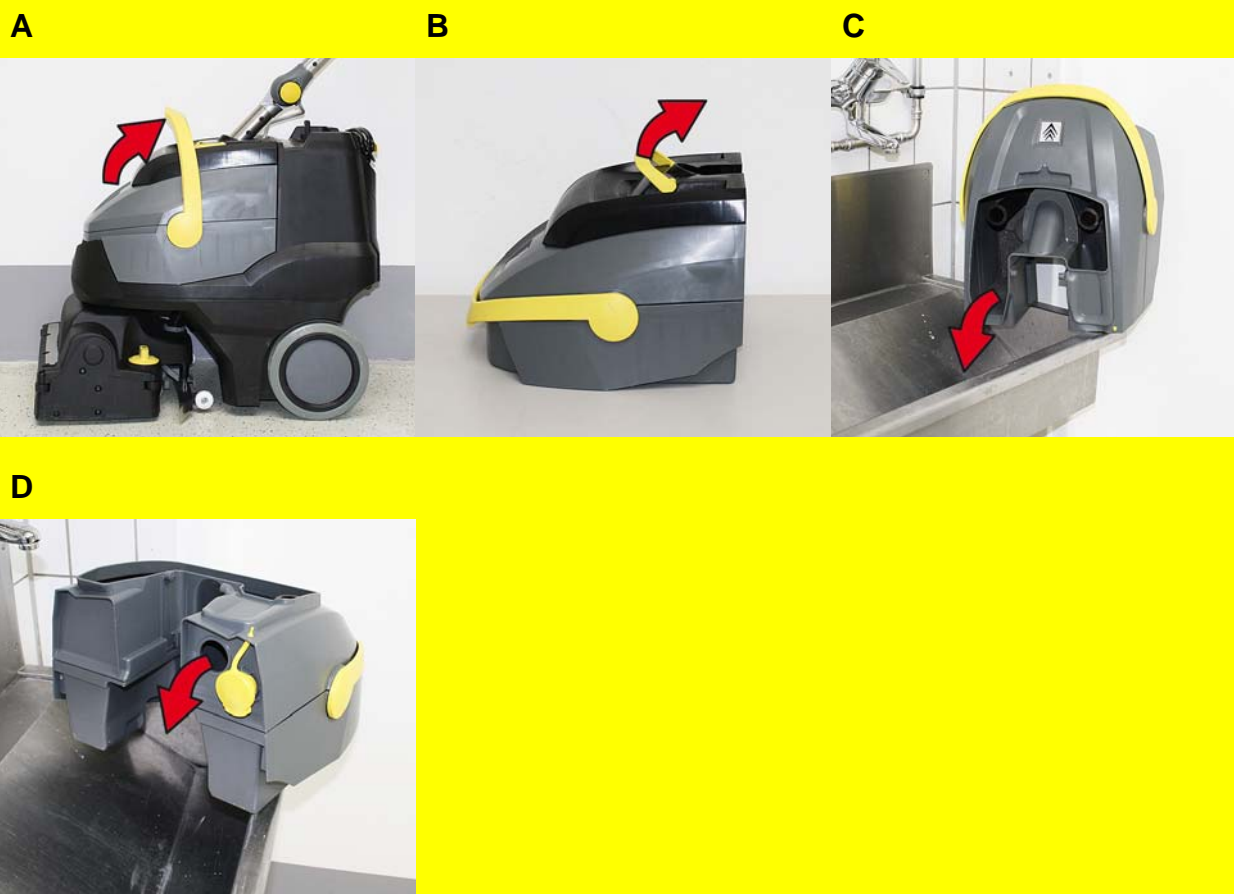
### Caution

*Vacuum lips and brush can be deformed permanently. Always park the appliance with the parking stand folded out.*

- E Push the appliance down on the steering wheel until the parking stand is folded out.

## Finish operation

### 2



### Emptying the Dirt Water Reservoir

#### ⚠ Warning

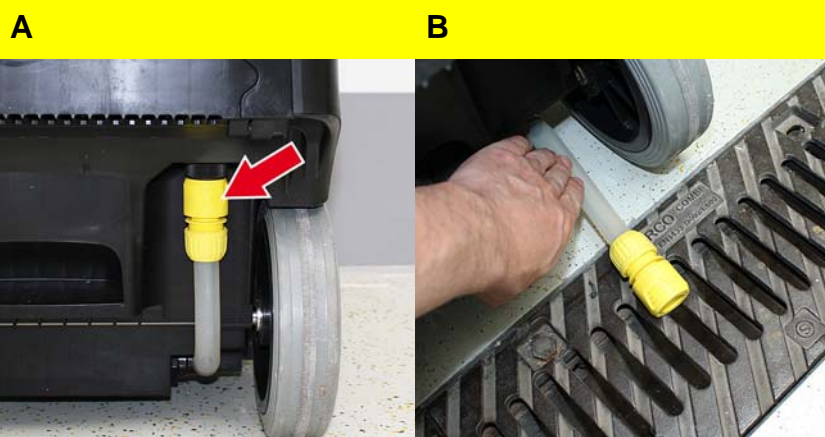
Please observe the local provisions regarding the wastewater treatment.

- A Swivel the handle of the wastewater tank up and let it snap into place.  
Remove the dirt water reservoir.
- B Remove the cover of the wastewater tank.
- C Empty the wastewater tank.  
Swivel the wastewater tank sideways during emptying so that the tank is completely drained.  
Rinse the dirt water reservoir with clear water.

or

- D Open closure and drain the wastewater tank.

### 3



### Emptying the Fresh Water Tank

#### ⚠ Warning

Please observe the local provisions regarding the wastewater treatment.

- A Slide the coupling down.
- B Remove the hose of the level indicator and swivel it downwards.

### 4



### Folding down the steering column

To reduce the space requirements for transport and storage, the steering column can be folded down.

- A Release the star knob for the transport position.  
Swivel the steering wheel forwards.  
Tighten the star handle.

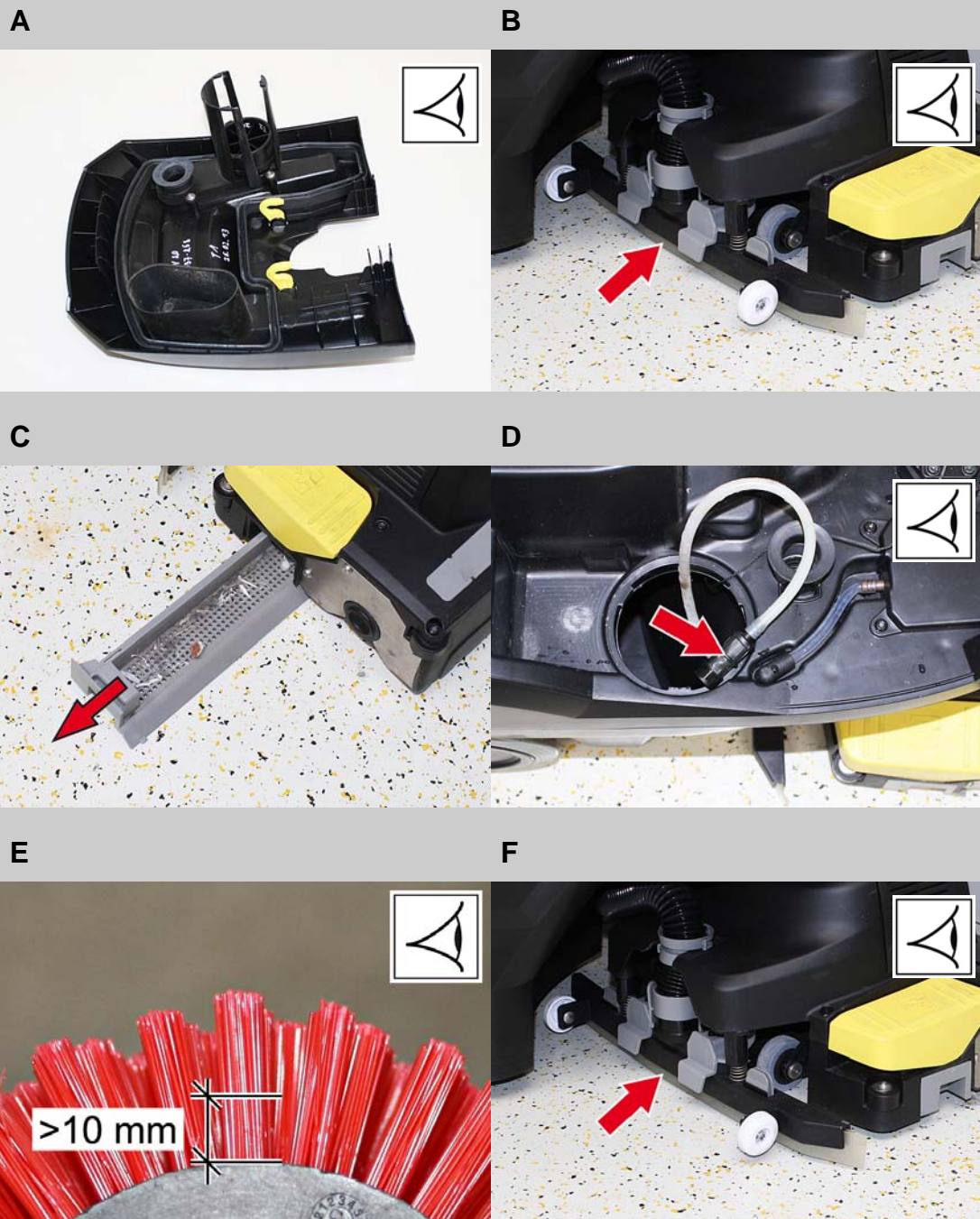
## Maintenance and care

daily

monthly

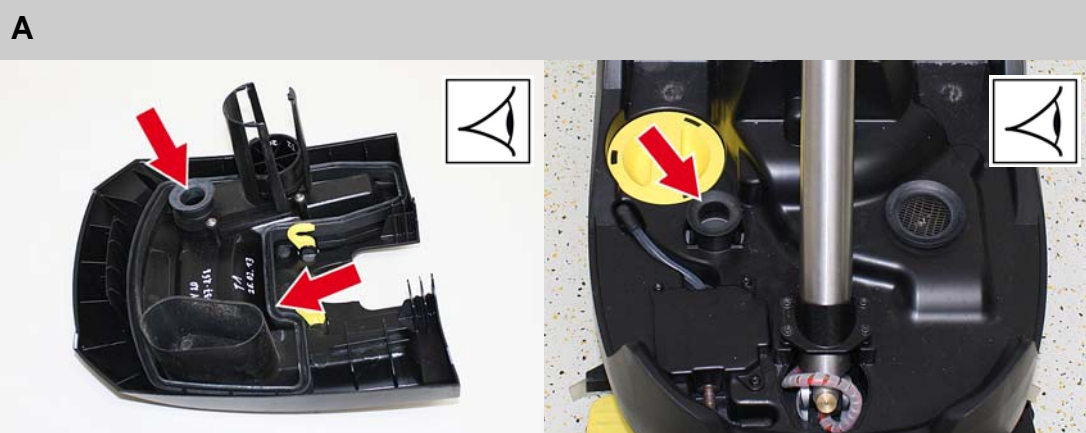
Kärcher Customer Service

### 1



- ⚠ Warning**  
*Risk of damage. Do not wash down the appliance with water and do not use aggressive detergents.*
- A Drain off dirt water.  
 Remove the lid of the wastewater reservoir and wash the inside of the lid and the float with water. Rinse the dirt water tank with clear water.
  - B Clean the vacuum bar.  
 Clean the vacuum lips, check for wear and replace them if required.
  - C Remove bulk waste container and empty it.
  - D Clean the fresh water filter.
  - E Clean brush.  
 Check the brushes for wear, replace if required.
  - F Remove the water distribution bar on the cleaning head and clean the water channel.
  - G Clean the outside of the appliance with a damp cloth which has been soaked in mild detergent.

### 2



- A Check the condition of the seals between the appliance and the wastewater reservoir; replace if required.

### 3

Have annual customer service work performed.



Agile, lightweight, quiet: The BR 35/12 C scrubber drier with its fast rechargeable, high-performance lithium-ion battery, rotating brush head, KART & roller technology and ecoefficiency mode.



**1 Brush head rotatable by +/- 200° with KART technology, allowing the machine to be steered. For easy negotiation of curves**

- Extremely manoeuvrable and effective – ideal for areas with a lot of furniture.
- The brush is always transverse to the direction of travel. The suction is always perpendicular to the direction of travel.

**2 Includes high performance lithium-ion battery.**

- Completely maintenance-free despite a service life that is three times longer than conventional batteries.
- Interim or partial charging is also possible where necessary.

**3 ecoefficiency mode**

- Saves resources and extends run time by up to 50%.
- 40% reduction in noise level.

**4 Compact device**

- Driving away from the wall is possible at a 90° angle.
- No protrusions from the device; easy handling.



## BR 35/12 C Bp Pack

- ecoefficiency mode
- Includes Sweeping function
- Handlebar height-adjustable

### Technical data

|                                 |                   |                   |
|---------------------------------|-------------------|-------------------|
| <b>Order No.</b>                | 1.783-450.0       |                   |
| <b>EAN code</b>                 | 4039784617278     |                   |
| <b>Brush working width</b>      | mm                | 350               |
| <b>Vacuum working width</b>     | mm                | 450               |
| <b>Intake performance</b>       | W                 | 500               |
| <b>Battery capacity</b>         | Ah                | 21                |
| <b>Battery voltage</b>          | V                 | 25.2              |
| <b>Fresh / dirty water tank</b> | l                 | 12 / 12           |
| <b>Brush contact pressure</b>   | g/cm <sup>2</sup> | 150               |
| <b>Brush speed</b>              | rpm               | 700-1500          |
| <b>Max. area performance</b>    | m <sup>2</sup> /h | 1400              |
| <b>Weight</b>                   | kg                | 35                |
| <b>Dimensions (L x W x H)</b>   | mm                | 1000 × 450 × 1300 |

### Equipment

|  |                  |
|--|------------------|
| <b>Roller brush</b>                          | ■                |
| <b>Two-tank system</b>                       | ■                |
| <b>Variable contact pressure</b>             | ■                |
| <b>Battery and on-board charger included</b> | ■                |
| <b>Battery type</b>                          | maintenance-free |
| <b>Transport wheels</b>                      | ■                |
| <b>Straight squeegee</b>                     | ■                |

■ Included in delivery.

# Accessories for BR 35/12 C Bp Pack 1.783-450.0

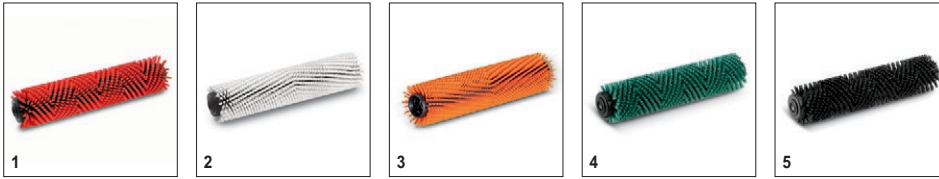


1

|                            |   | Order No.   | Quantity   | Battery voltage | Battery capacity | Battery type     | Price | Description |
|----------------------------|---|-------------|------------|-----------------|------------------|------------------|-------|-------------|
| <b>Batteries</b>           |   |             |            |                 |                  |                  |       |             |
| Lithium-ion battery, 21 Ah | 1 | 6.654-294.0 | 1 piece(s) | 25.2 V          | 21 Ah            | maintenance-free |       |             |

Included in delivery.
  Available accessories.

# Accessories for BR 35/12 C Bp Pack 1.783-450.0



|                              |   | Order No.   | Hardness /<br>Brush type | Length | Colour | Quantity      | Price | Description  |                                     |
|------------------------------|---|-------------|--------------------------|--------|--------|---------------|-------|--|-------------------------------------|
| <b>Roller brushes for BR</b> |   |             |                          |        |        |               |       |  |                                     |
| Roller brush, medium         | 1 | 4.037-031.0 | mittel                   | 350 mm | red    | 1<br>piece(s) |       | Roller brush, medium-hard, red. Length: 350 mm. With wear-resistant star-wheel mechanism. For normal use. Bristles: Polypropylene, 0.4 mm thick, 20 mm long.   | <input checked="" type="checkbox"/> |
| Roller brush, soft           | 2 | 4.037-036.0 | sehr weich               | 350 mm | white  | 1<br>piece(s) |       | Roller brush, very soft, white. Length: 350 mm. With wear-resistant star-wheel mechanism. For cleaning sensitive floors and polishing. Bristles: Polyamide, 0.3 mm thick, 20 mm long.                              | <input type="checkbox"/>            |
| Roller brush, high/low       | 3 | 4.037-037.0 | mittel                   | 350 mm | orange | 1<br>piece(s) |       | Roller brush, high/low, medium-hard, orange. Length: 350 mm. With wear-resistant star-wheel mechanism. For cleaning heavily structured floors and deep crevices. Bristles: Polyamide, 0.6 mm thick, 15-20 mm long. | <input type="checkbox"/>            |
| Roller brush, hard           | 4 | 4.037-038.0 | Hard                     | 350 mm | green  | 1<br>piece(s) |       | Roller brush, hard, green. Length: 350 mm. Wear-resistant star-wheel mechanism. For heavily soiled floors and basic cleaning. Bristles: Polyamide with silicon carbide, 0.6 mm thick, 20 mm long.                  | <input type="checkbox"/>            |
| Roller brush, very hard      | 5 | 4.037-039.0 | sehr hart                | 350 mm | black  | 1<br>piece(s) |       | Very hard, for extremely sticky dirt and for deep cleaning; for unsensitive surfaces only.   | <input type="checkbox"/>            |

■ Included in delivery.  Available accessories.



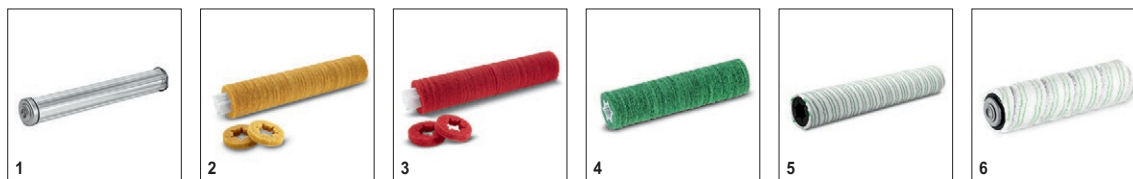
# Accessories for BR 35/12 C Bp Pack 1.783-450.0



|                                   |   | Order No.   | Length | Colour      | Quantity | Price | Description                          |   |
|-----------------------------------|---|-------------|--------|-------------|----------|-------|--------------------------------------|---|
| <b>Squeegees for suction bars</b> |   |             |        |             |          |       |                                      |   |
| Suction lips                      | 1 | 4.037-035.0 | 450 mm | transparent | 2 parts  |       | Grooved, oil-resistant, polyurethane | ■ |

Included in delivery.
  Available accessories.

# Accessories for BR 35/12 C Bp Pack 1.783-450.0



|                         |   | Order No.   | Hardness /<br>Brush type | Length | Diame-<br>ter | Colour      | Price | Description   |                          |
|-------------------------|---|-------------|--------------------------|--------|---------------|-------------|-------|---|--------------------------|
| <b>Roller pad shaft</b> |   |             |                          |        |               |             |       |   |                          |
| Pad roller shaft        | 1 | 4.762-009.0 |                          | 350 mm |               |             |       | Roller pad shaft, aluminium For roller pads or microfiber rollers, length 350 mm. | <input type="checkbox"/> |
| <b>Roller pads</b>      |   |             |                          |        |               |             |       |   |                          |
| Roller pad on sleeve    | 2 | 6.369-053.0 | weich                    | 350 mm | 96 mm         | yellow      |       |   | <input type="checkbox"/> |
|                         | 3 | 6.369-047.0 | mittel                   | 350 mm | 96 mm         | red         |       |   | <input type="checkbox"/> |
|                         | 4 | 6.369-052.0 | Hard                     | 350 mm | 96 mm         | green       |       |   | <input type="checkbox"/> |
| <b>Microfibre shaft</b> |   |             |                          |        |               |             |       |   |                          |
| Microfibre roller       | 5 | 4.037-040.0 | Mikrofaser               | 350 mm | 96 mm         | light green |       |   | <input type="checkbox"/> |
|                         | 6 | 4.037-066.0 | Mikrofaser               | 350 mm | 96 mm         | Light green |       |   | <input type="checkbox"/> |

■ Included in delivery. □ Available accessories.

# Accessories for BR 35/12 C Bp Pack 1.783-450.0



|                                    |   | Order No.   | Length | Colour | Quantity   | Price | Description  |                          |
|------------------------------------|---|-------------|--------|--------|------------|-------|--|--------------------------|
| <b>Miscellaneous</b>               |   |             |        |        |            |       |  |                          |
| Filling hose                       | 1 | 6.680-124.0 | 1.5 m  |        | 1 piece(s) |       | 1,500-mm filling hose for easy device filling from a water tap. With universal tapered fitting for all standard taps.  | <input type="checkbox"/> |
| Pump spray bottle 1 l              | 2 | 6.394-409.0 |        | yellow | 1 piece(s) |       |  | <input type="checkbox"/> |
| DS 3 cleaning agent dosing station | 3 | 2.641-811.0 |        |        | 1 piece(s) |       | Directly connectable with the tap, water and detergent will be filled in the fresh water tank in the preset mixture. Can also be used with filling system kit. | <input type="checkbox"/> |

■ Included in delivery. □ Available accessories.